



École Pratique de Service Social

6th
PARIS
SUMMER
SCHOOL
OF SOCIAL
WORK
JULY 1-22 2022





**COMMITTED TO BUILDING A BETTER
WORLD SINCE 1913**

Ecole Pratique de Service Social is one of the oldest schools of Social Work in France. Our alumni have distinguished themselves for the past century by their significant contributions to Social Work in France and in the world.

Eiffel Tower, Orientation Day

WELCOME!

Welcome to our 6th International Summer School of Social Work!

After 2 years of a dramatic Covid-19 pandemic, find out how French social workers responded to the crisis during our 6th annual Paris Summer School of Social Work. With new events and experiences, a streamlined academic schedule, online digital courses, innovative social impact projects and the added perk of an extra week-end in Paris, free of charge, what is there not to like?

Our 3 week summer program is as always packed with learning and cultural activities and blends just the right amount of formal learning, professional field visits, and much more in a very international environment. Social work just keeps on getting better all the time!

Olivier Huet

Director of Ecole Pratique de Service Social



The Paris Summer School of Social Work is the best program for study-abroad. It is excellent academically, and the combination of academic classroom time, field visits, and field placements provide the most comprehensive and well-rounded learning about social work in France. I am extremely satisfied and I believe my students are happy and satisfied as well. I look forward to bringing many more students in the future.

Professor Delavega – Associate Director of the Benjamin L. Hooks Institute for Social Change, University of Memphis, USA.

CONTENTS 4 Academic Program • 8 Social Program • 10 Week-end Trips • 12 Venue & Housing • 14 Requirements • 16 Fees & Finances • 18 Application guidelines

ACADEMIC PROGRAM

Described by our Alumni as «**intensive**», this program delivered in English, offers a comprehensive overview of Social Work in France through lectures (on and off-line), multiple field visits, placements, social impact projects as well as a complete immersion into the French way of life.

ON-LINE CLASSES - Follow them at your own pace before and after the program.

IN-CLASS LECTURES - One lecture per day from 9:00 am to noon with professors of social work or professional social workers.

FIELD VISITS - Afternoons include field visits to various agencies. Meeting French social workers in their own environment is an important part of the program as well as

discovering innovative projects.

INDIVIDUAL PLACEMENTS - Individual placements take place once a week and provide an exceptional and valuable insight into Social Work in France in a variety of agencies: welfare centers, shelters, NGO's with real hands-on activities!

SOCIAL IMPACT PROJECTS (SIPS) - Working together within a diverse, international team, thinking outside of the box with your group to create an innovative approach to social intervention.

ETHNOGRAPHIC OBSERVATION



Observe and interact with participants in their real-life environment and produce a narrative account to be used against a theoretical backdrop.



WHAT TOPICS DOES THE PROGRAM COVER?

- History of Social Work in France
- Social Work Policies
- Ethics and deontology
- Poverty and exclusion
- Immigration and refugees
- Child Protection
- Mental Health
- Gender and diversity
- Prostitution
- Addictions
- Disabilities



The summer school has given me a deeper understanding, and perspective on the issues that marginalised groups confront on a daily basis in France. It has allowed me to compare my own practice, and understanding of issues in the UK, to those that social workers have to work with in France.

Tim - United Kingdom



I loved the opportunity to go in and visit the agencies, I felt that they were just the right length of time to get a good grasp on the provided services and agency mandates, while also getting to observe and take in the work being done. Everyone that met with us was wonderful and friendly and so genuinely passionate about their work and curious to hear from us !

Jessica - Canada

WORK LOAD

Whether you are taking the program for credit or not, we expect every participant to take part in the work with the same level of commitment regardless of academic status. Workload is manageable, just follow the guidelines set out at the beginning of the program!

ASSESSMENT

Individual work - global participation and attendance, weekly journals, on-line classes.

Group work - one written paper and final oral presentation of social impact projects (SIPS).

GROUP SESSIONS

Weekly debrief sessions are organized to make sure

LANGUAGE REQUIREMENTS

The Paris Summer School of Social Work is a French program delivered in English. Some visits may be translated from French into English. Placements are carried out in French immersion with an English speaker on hand when available.

Acquiring some notions of French before the program starts is strongly advisable!

WHO IS THIS PROGRAM SUITABLE FOR?

- Students (under-graduates or graduates)
- PhD's, post-docs, researchers
- Practising Social Workers
- Faculty members (must not be signed up as group leaders)

Participants must have completed at least one year of university in the field of Social Work, Social Welfare or Sociology (or related field)

PROGRAM SCHEDULE 2022

(may be subject to change)

WEEK 1	MONDAY JUNE 27	TUESDAY JUNE 28	WEDNESDAY JUNE 29	THURSDAY JUNE 30	FRIDAY JULY 1	SATURDAY JULY 2	SUNDAY JULY 3
9:00 - 12:00				Arrivals	ACADEMIC OPENING	FREE	
12:00 - 14:00					Lunch break		
14:00 - 15:00					Orientation 1/2 Day 1	Orientation 1/2 Day 2	FREE
15:00 - 17:00						FREE	
17:00 - 18:00				Meet & Greet	OPENING CEREMONY + INTERNATIONAL EVENING		
18:00				THURSDAY JULY 7	FRIDAY JULY 8	SATURDAY JULY 9	SUNDAY JULY 10
WEEK 2	MONDAY JULY 4	TUESDAY JULY 5	WEDNESDAY JULY 6	Field visit	Lecture	LOIRE VALLEY TOUR	
9:00 - 12:00	Lecture	Lecture	INDIVIDUAL PLACEMENTS	DEBRIEF SESSION SIPS METHODOLOGY	Lunch break		
12:00 - 14:00	Lunch break	Lunch break			Lecture		
14:00 - 15:00	Transportation time	Transportation time		FREE	FREE		
15:00 - 17:00	Field Visit	Field Visit					
17:00 - 18:00	Break	Break					
18:00	GROUP PREPARATION	GROUP PREPARATION	WEDNESDAY JULY 13	THURSDAY JULY 14	FRIDAY JULY 15	SATURDAY JULY 16	SUNDAY JULY 17
WEEK 3	MONDAY JULY 11	TUESDAY JULY 12	Ethnographic Research instructions	SIPS METHODOLOGY GROUP PREPARATION	Lecture	FREE	VERSAILLES
9:00 - 12:00	Lecture	Lecture	Transportation time		Lunch break		
12:00 - 14:00	Lunch break	Lunch break	Ethnographic Research	FREE	Transportation time		
14:00 - 15:00	Transportation time	Transportation time	Ethnographic Research Debrief		Field Visit		
15:00 - 17:00	Field Visit	Field Visit	Break		Break		
17:00 - 18:00	Break	Break			GROUP PREPARATION		
18:00	GROUP PREPARATION	FILM SCREENING	GROUP PREPARATION	THURSDAY JULY 21	FRIDAY JULY 22	JULY 23 - 25	
WEEK 4	MONDAY JULY 18	TUESDAY JULY 19	WEDNESDAY JULY 20	DEBRIEF SESSION SIPS	SIPS		
9:00 - 12:00	Lecture	Lecture	INDIVIDUAL PLACEMENTS	SOCIAL EVENT	SOCIAL EVENT		
12:00 - 14:00	Lunch break	Lunch break		SIPS	SIPS		
14:00 - 17:00	Field Visit	Field Visit		Break	Break		
17:00 - 18:00	Break	Break		GROUP PREPARATION	ORAL PRESENTATION & CLOSING CEREMONY		
18:00	GROUP PREPARATION	GROUP PREPARATION					

FIELD VISITS

WALKING TOURS / VISITS

SOCIAL IMPACT PROJECTS

BONUS WEEK-END STARTS
SAT. 23 ENDS MON. 25
LAST DEPARTURES & DORM
CHECK-OUT
MONDAY 25
10:00 AM.

SOCIAL PROGRAM

ORIENTATION DAY AND CITY TOURS

We know how exciting and sometimes overwhelming it can be to arrive in an unknown place. You need to rest and explore, all at once!

That's why we make it a priority to give you time to get your bearings, learn how to move around the city and see some of the sights before the program starts.

Discover Paris old and new. Walk through and past some of the most emblematic places in Paris by land and by water: Luxembourg Gardens, Notre-Dame Cathedral, Ile de la Cité, Latin Quarter, Eiffel Tower, Montparnasse, Arc of Triumph, museums (includes Orsay and Louvre Museum*) and gardens.

*or equivalent alternatives



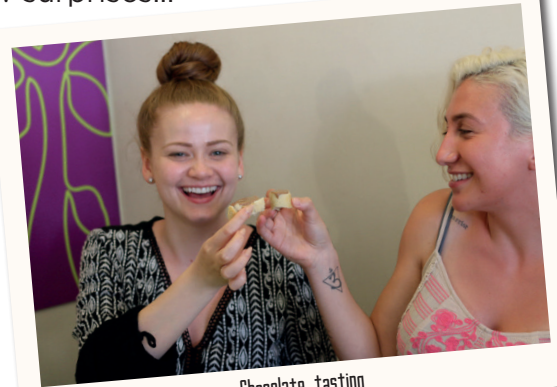
HOW MUCH DOES THE SOCIAL PROGRAM COST?

Tickets and entrance fees to social events are included in the Paris Summer School of Social Work package, there are no additional costs!

SOCIAL EVENTS

We have scheduled only the best of social events.

- Meet & Greet
 - Opening and closing ceremonies
 - International evening
 - Chocolate tasting with renowned expert
- And a few surprises...



Chocolate tasting

WHY PARIS ?

Paris is a fabulous place to be! Fun social events provide great insight into French culture and way of life. Having the dorm in the center of Paris is a unique opportunity to take full advantage of the vibrant life in the City of Light.



I really liked and enjoyed the Paris Summer School of Social Work! It was a great atmosphere and a good mix between academic and touristic program. I was very glad to take part in it. I want to say thank you for a perfect organization!

Lena - Germany



WEEK-END TRIPS



Loire Valley Tour
(2 days & 1 night)
Chambord Castle, cities of Blois and Amboise,
Chenonceau Castle and wine tasting



Versailles Tour
(1 day)
Castle, gardens, Petit Trianon, Grand Trianon

Experience two exclusive get-aways! Relax and discover the beauty of the French countryside at your own pace. Hotel, transportation and entrance tickets are included!



Lectures, field visits, and projects gave us unparalleled access into the French social service system. I'm now going back home to my MSW program refreshed and with a plethora of knowledge that I didn't initially expect to receive. This is an opportunity that you don't want to miss.

Joshua - USA



VENUE & HOUSING



Foyer International des Etudiantes

VENUE - Lectures take place in our gorgeous 19th century headquarters. Located in the heart of the Montparnasse area, the school is close to the Latin Quarter and breath-taking Luxembourg Gardens. It is surrounded by great cafés, restaurants and shops in one of the safest areas of the capital, day or night.

HOUSING - Accomodation is provided a short walk away from EPSS at the Foyer International des Etudiantes. It is a beautiful student hostel and provides standard double dorm rooms (single up-grade on request only) in a very old-world atmosphere. Housing package includes breakfast, seven days a week.

Metro and bus stops are just around the corner and offer easy and safe access to the rest of the city.

Foyer International des Etudiantes
93 boulevard Saint Michel 75005 Paris



DORM SERVICES

- Internet
- Safe entrance 24/7
- Rooftop view
- Library and lounge
- Shared kitchen and bathroom
- Coin laundry and dryer
- Sheets, bedding
- Elevator
- **NO** Air-conditioning



Networking with other social work students and professionals from around the globe while taking in the sites and culture of Paris contributed to round this out as a wonderful experience. Erica - USA



REQUIREMENTS

LANGUAGE

Language and communication skills are an important part of our program. You must be fluent* in English and have a basic level** in French. It is your responsibility to have the required level in both languages.

***English:** a TOEFL score of 80 (or equivalent score in any other test) or IELTS score of 6.5 or equivalent of B2-C1 within the Council of Europe's Common European Framework of Reference Score (CECRL).

****Basic French:** end of high-school French (equivalent of B1 within the Council of Europe's Common European Framework of Reference)

WALKING

Paris is the pedestrian's paradise. Most Parisians use the excellent public transportation system to move around the city. It is safe, clean and available day and night, with metros and buses running every few minutes.

During the program, attendees will be embracing the French way of life, including the walking! If you are differently abled, let's work together to see how we can answer your needs.



COVID-19

Any necessary measures regarding safety and vaccination will be followed and applied in compliance with French governmental health guidelines. Additional requirements may become mandatory before the session begins. These will be communicated as necessary.

GROUP LEADERS

If you are a faculty member travelling with a group of students, specific application guidelines and rates will apply. We will be happy to have you join us in some program activities and house you at the dorm. Please contact us well in advance, so we can help you prepare for the program with your students and network with French Social Workers too!



Field visit - Grands Voisins



I know so much more about French policies and Social Services. This program is also great for any one who wants to explore Paris and France like a local! **Shimin - China**



FEES & FINANCES

In order to make our program available to a wide range of applicants, rates are broken down into 3 categories based on GDP of applicant's country. These categories and related rates can be found on the program website at <https://epss.fr/paris-summer-school-of-social-work>

	ACADEMIC PARTNERSHIP	EARLY-BIRD (before Dec. 31)	STANDARD RATE
ZONE A	1500 €	1600 €	1700 €
ZONE B	1970 €	2170 €	2370€
ZONE C	2490 €	2740 €	2990 €

ERASMUS+

Students or faculty members affiliated to European universities may apply for Erasmus+ grants from their home universities (conditions apply). Please contact your international coordinator to receive the necessary information.

Contact: international@epss.fr

SCHOLARSHIPS

École Pratique de Service Social does not deliver scholarships. You may consult your home university study-abroad advisor to see if some alternate funding is available. American citizens may contact Generation Study Abroad for information or support.



WHAT IS INCLUDED IN THE PARIS SUMMER SCHOOL OF SOCIAL WORK FEE?

	DESCRIPTION	INCLUDED	RESTRICTIONS	STARTS	ENDS
STUDY PERIOD	E-learning, lectures, field visits, placements	•	-	July 1	July 22
ACCOMODATION	Double standard room	•	Single room upgrade on request 150 € charge applies	June 30	July 25
TRANSPORTATION PASS	Unlimited metro, buses, express rail	•	-	July 1	July 31
AIRPORT PICK-UP	Airport pick-up from airport	•	Specific hours, arrivals only	June 30	
BREAKFAST	7 days a week	•	-	July 1	July 25
ORIENTATION DAYS	Museums tickets, visits, tours	•	-	July 2	July 3
2-DAY LOIRE VALLEY TOUR	Transfers, hotel, breakfast, visits	•	-	July 9	July 10
1 DAY VERSAILLES TOUR	Tickets for castle, gardens, Petit Trianon, Grand Trianon	•	-	July 17	July 17
SOCIAL EVENTS	Opening and closing ceremonies, chocolate tasting	•	-	July 1	July 22
2 BONUS DAYS	2 BONUS days, stay for FREE	•	Accommodation and breakfast only	July 23	July 25
PLANE TICKET	Transport to/from home country	NOT INCLUDED			
MEALS	Lunches, dinners	NOT INCLUDED			
HEALTH INSURANCE	Must cover medical assistance	NOT INCLUDED			
PERSONAL EXPENSES	Must cover daily expenses	NOT INCLUDED			
OPTIONAL ACTIVITIES	Expenses for self-led activities	NOT INCLUDED			

APPLICATION GUIDELINES

HOW TO APPLY?

All applications must be submitted through our website: www.epss.fr

You may apply if:

- You are over 18
- You have completed at least one year of a higher- education program in Social Work, Social Welfare or Sociology (or related areas).
- You are fluent in English and master some basic French



The Paris Summer School of Social Work Program has been an incredible learning experience for my students. The School offers an intensive academic program that is challenging, informative, and fun. The low cost for this month-long program makes it an attractive alternative for undergraduate or graduate students.

Professor Kirk – Professor of Social Work, Kennesaw State University, USA

APPLICATIONS
OPEN

OCT 15

APPLICATIONS
CLOSE

APRIL 30

ARRIVALS

JUNE 30

STUDY PERIOD
STARTS

JULY 1

STUDY PERIOD
ENDS

JULY 22

BONUS DAYS

JULY 23-25
STAY
IN PARIS
FOR FREE!

DEPARTURES

JULY 25

Register on-line
www.epss.fr



Love you
PARIS



Our dedicated staff will be there to welcome you upon arrival, and provide any kind of support you may need in a variety of languages, 24 hours a day for the whole length of your stay. They are passionate about Social Work and their city. What greater way to discover both?

Feel free to contact our international coordinator. Monday to Friday, 9 am to 5:30 pm (4:30 on Fridays).
Reception: +33 1 42 79 50 20
Office : +33 1 42 79 50 23
E-mail: international@epss.fr



Register online at www.epss.fr



CY Cergy Paris Université



Erasmus

